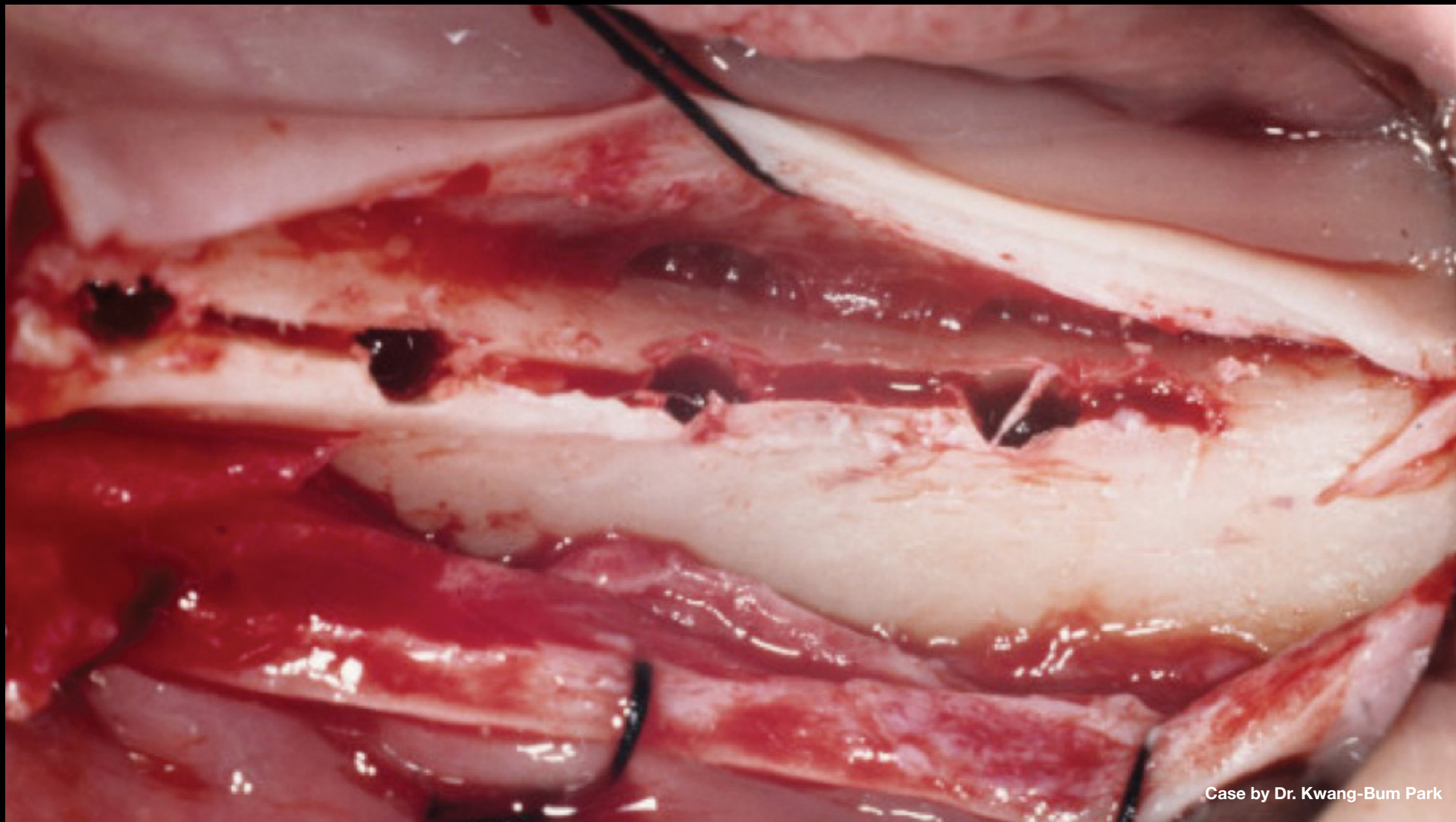


Ridge splitting technique using  
SmarThor + AnyRidge as expander

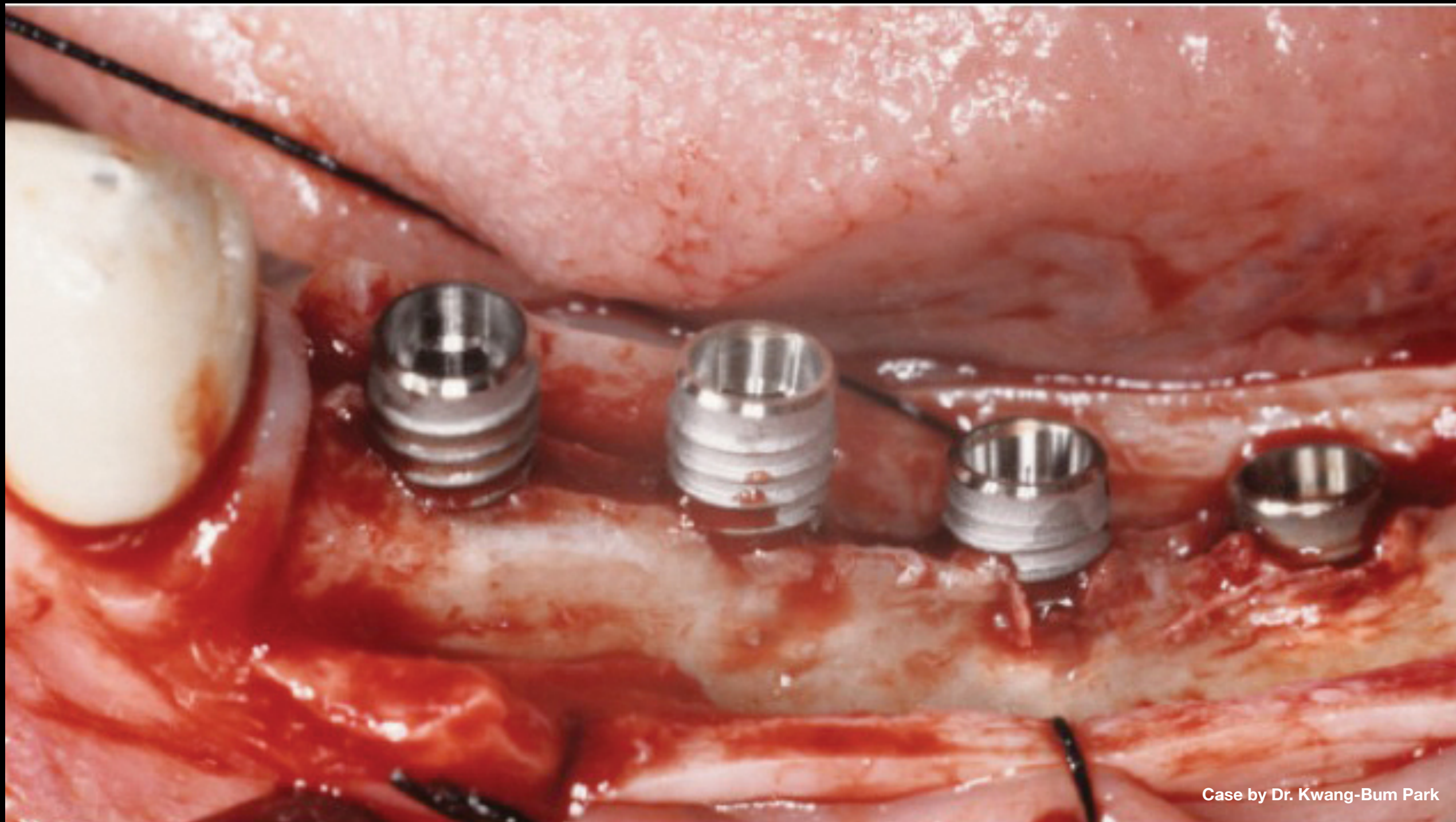
Dr. Kwang-Bum Park



Case by Dr. Kwang-Bum Park

**Clinical Case:**

- Ridge width was about 3mm on crest
- Ridge was split using thin saw (only horizontally to depth of implant length (11.5, 10, 8.5 & 7mm from front to back, respectively), followed by 2mm lance drilling
- Compare drilling site with ridge width

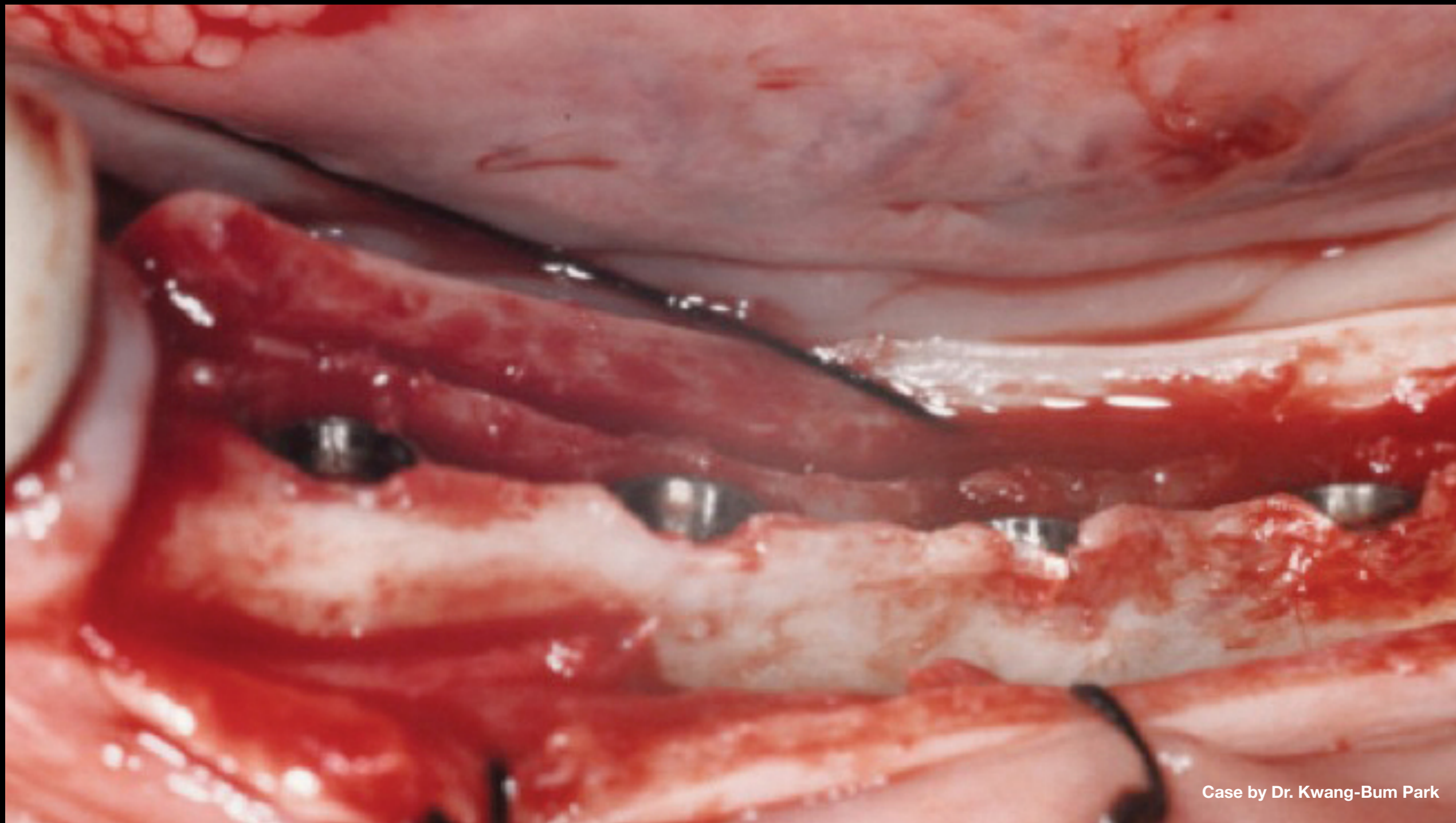


Case by Dr. Kwang-Bum Park

**Clinical Case:**

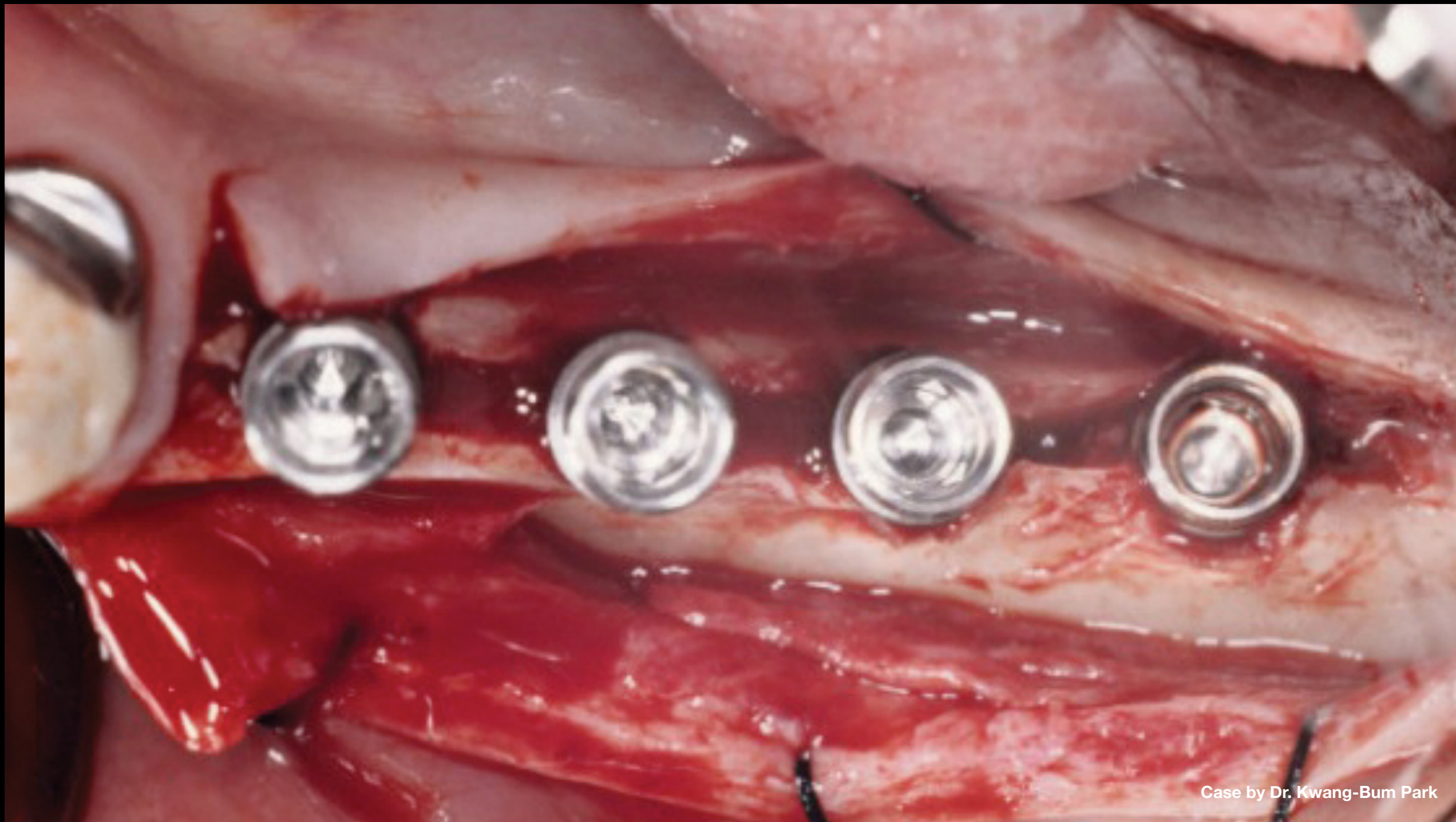
- Fixtures were initially placed using handpiece set at 40 Ncm torque force
- Fixtures were then screwed in further using torque wrench, one full turn on each fixture sequentially





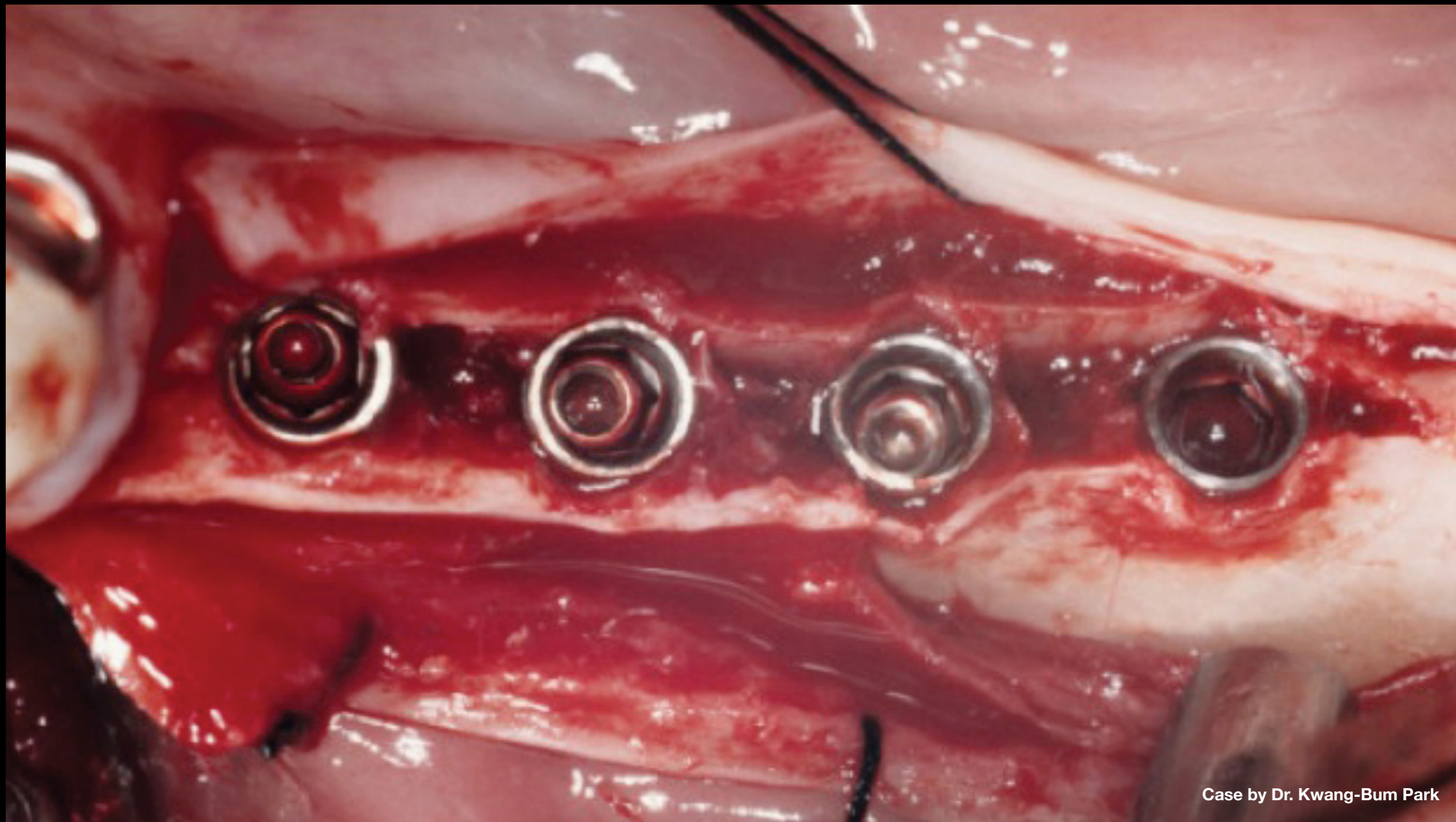
Case by Dr. Kwang-Bum Park

**Clinical Case:** All fixtures were placed 1 mm under crest in consideration of bone remodeling



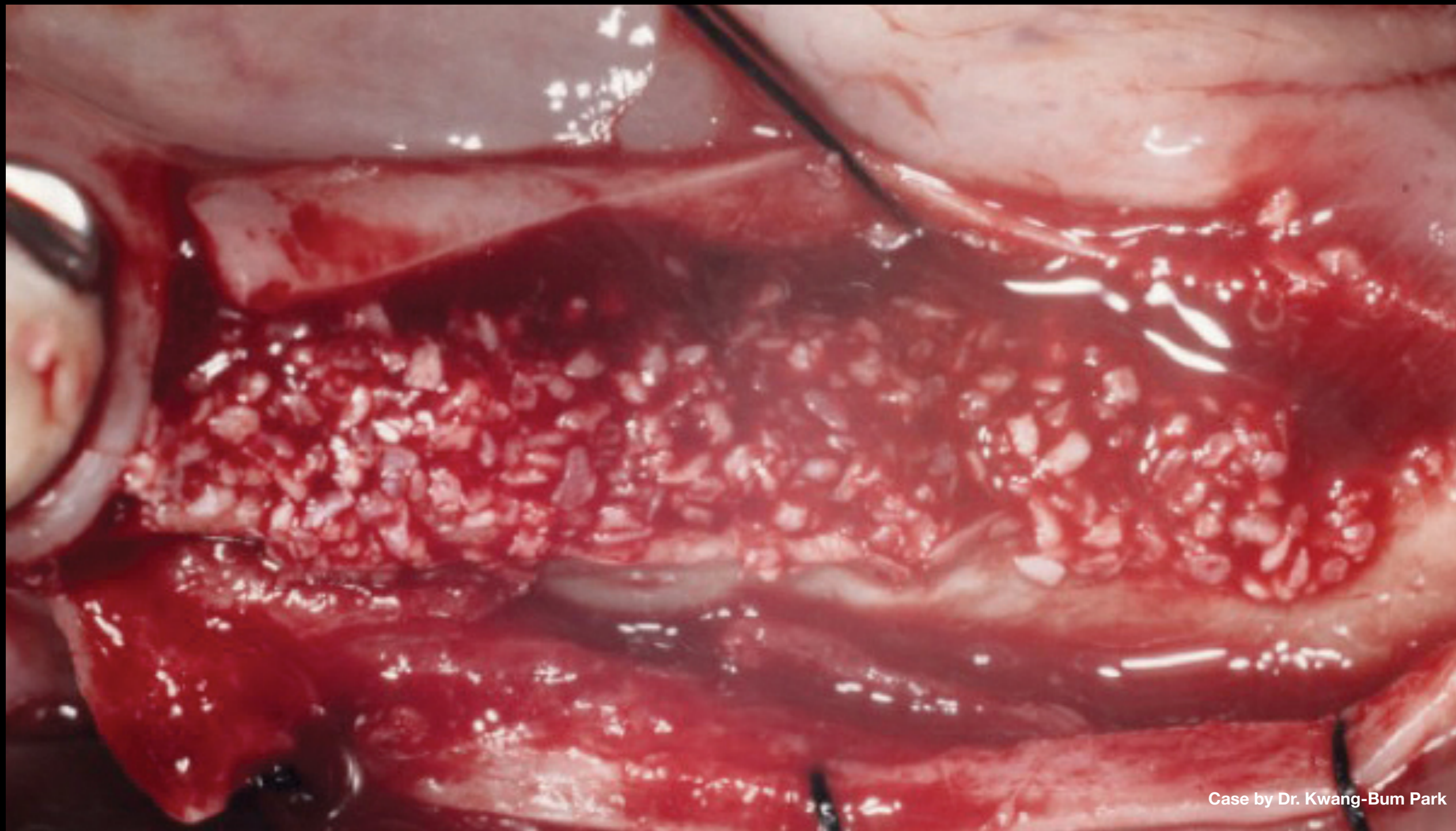
Case by Dr. Kwang-Bum Park

**Clinical Case:** Crestal bone was only split enough to create ideal width



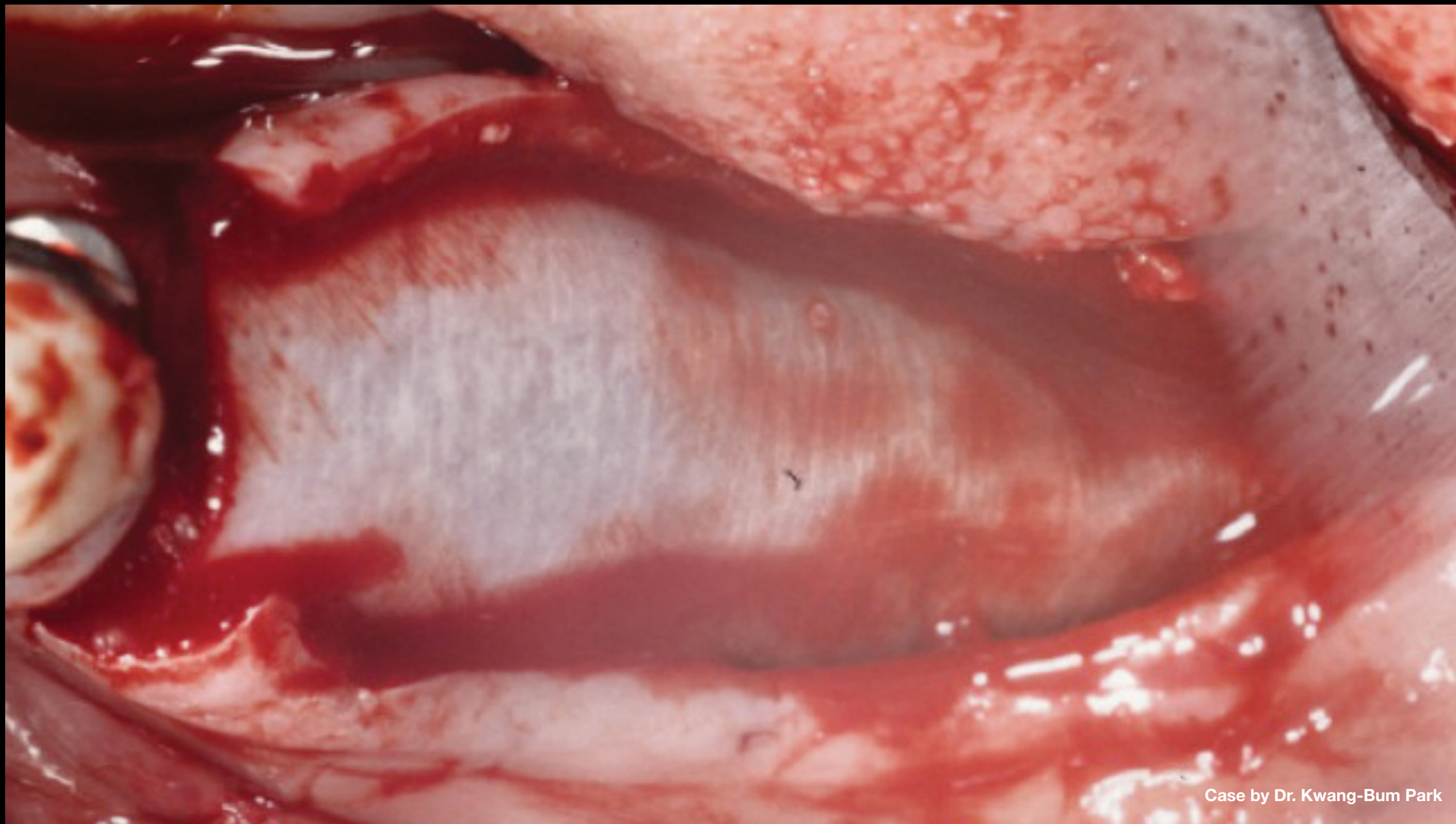
Case by Dr. Kwang-Bum Park

**Clinical Case:** Crestal bone was only split enough to create ideal width



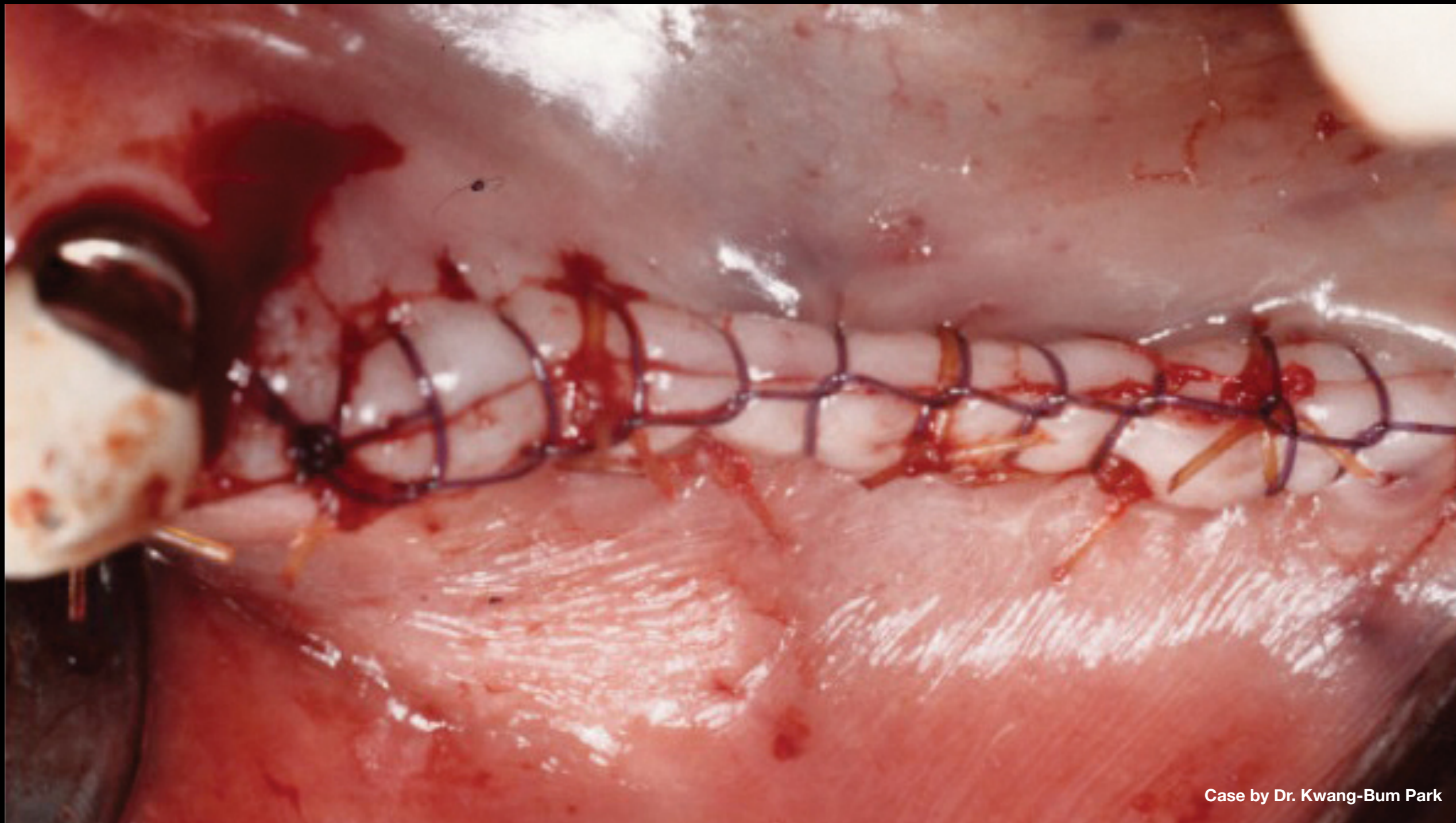
Case by Dr. Kwang-Bum Park

**Clinical Case:** Gap defect was filled with Mega-Oss allograft



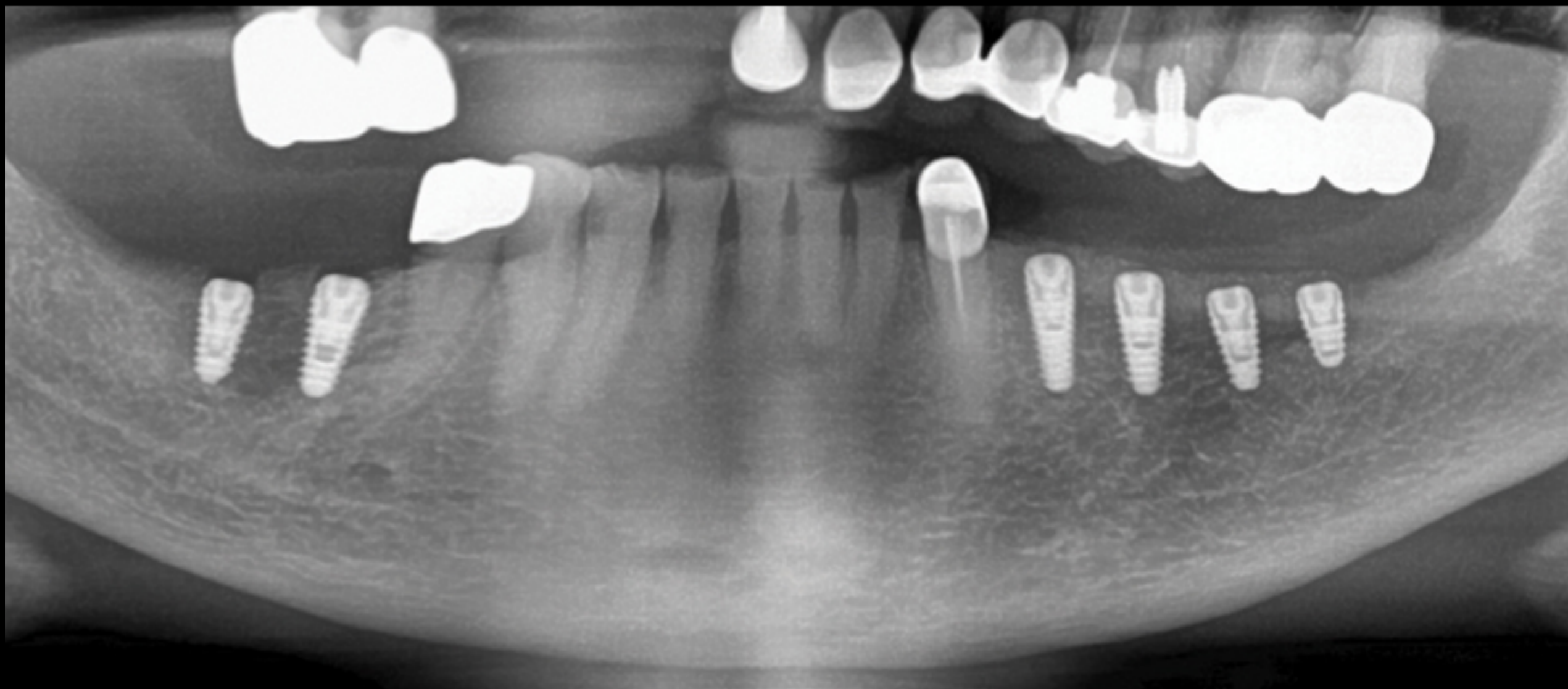
Case by Dr. Kwang-Bum Park

**Clinical Case:** Covered with collagen membrane



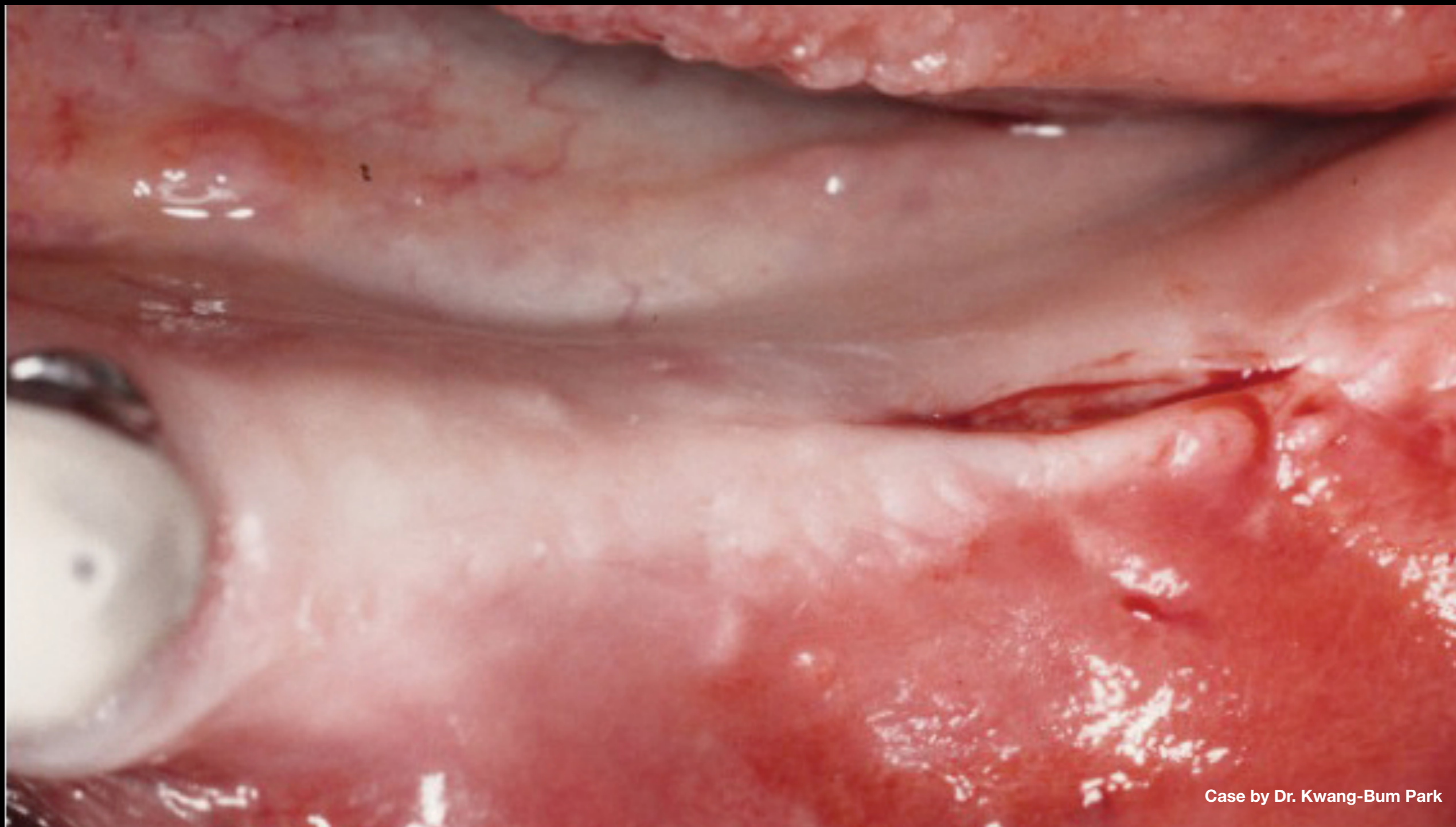
Case by Dr. Kwang-Bum Park

**Clinical Case:** Primary closure



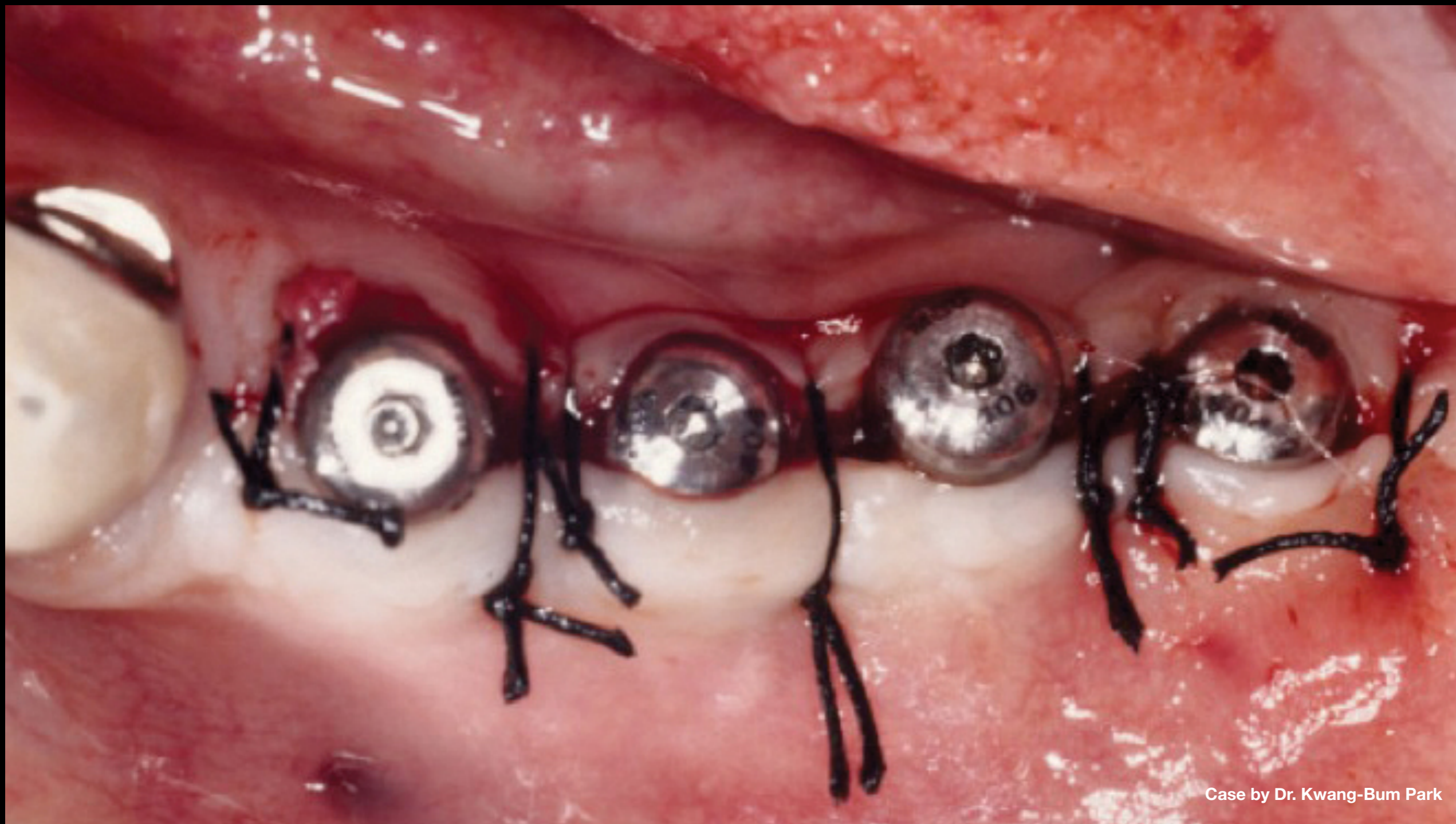
Case by Dr. Kwang-Bum Park

**Clinical Case:** Postoperative panoramic radiograph, both sides received same procedure



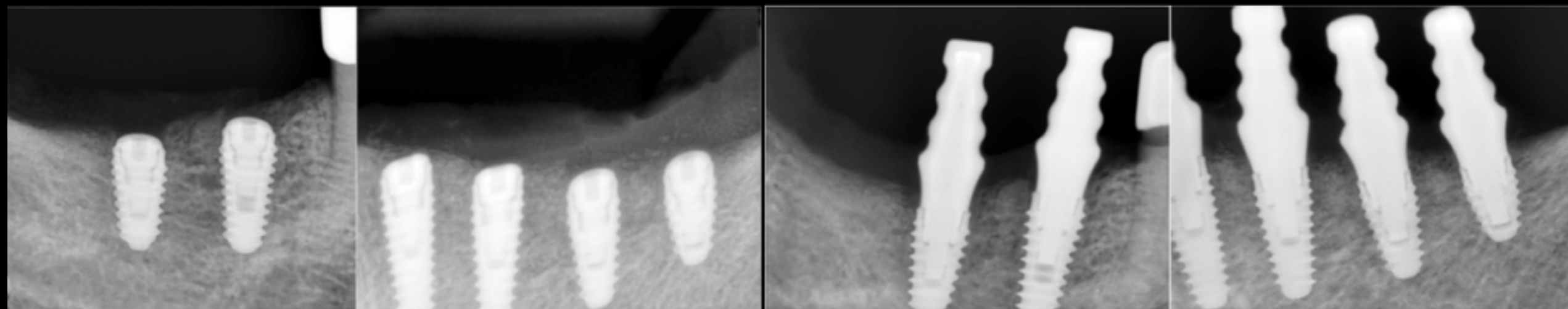
Case by Dr. Kwang-Bum Park

**Clinical Case:** Healing was uneventful, and second stage surgery was performed with simple incision after 3 months



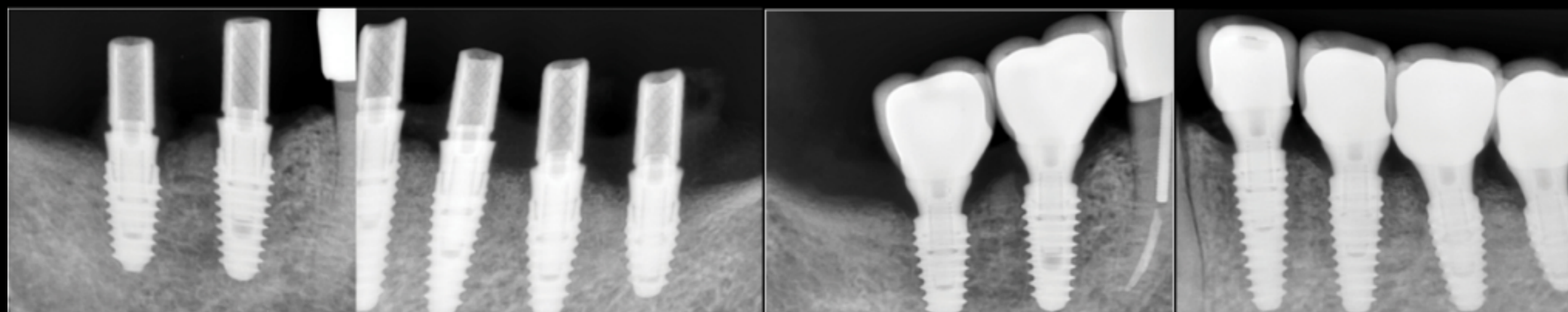
Case by Dr. Kwang-Bum Park

**Clinical Case:** Healing abutments



6wks

4mns



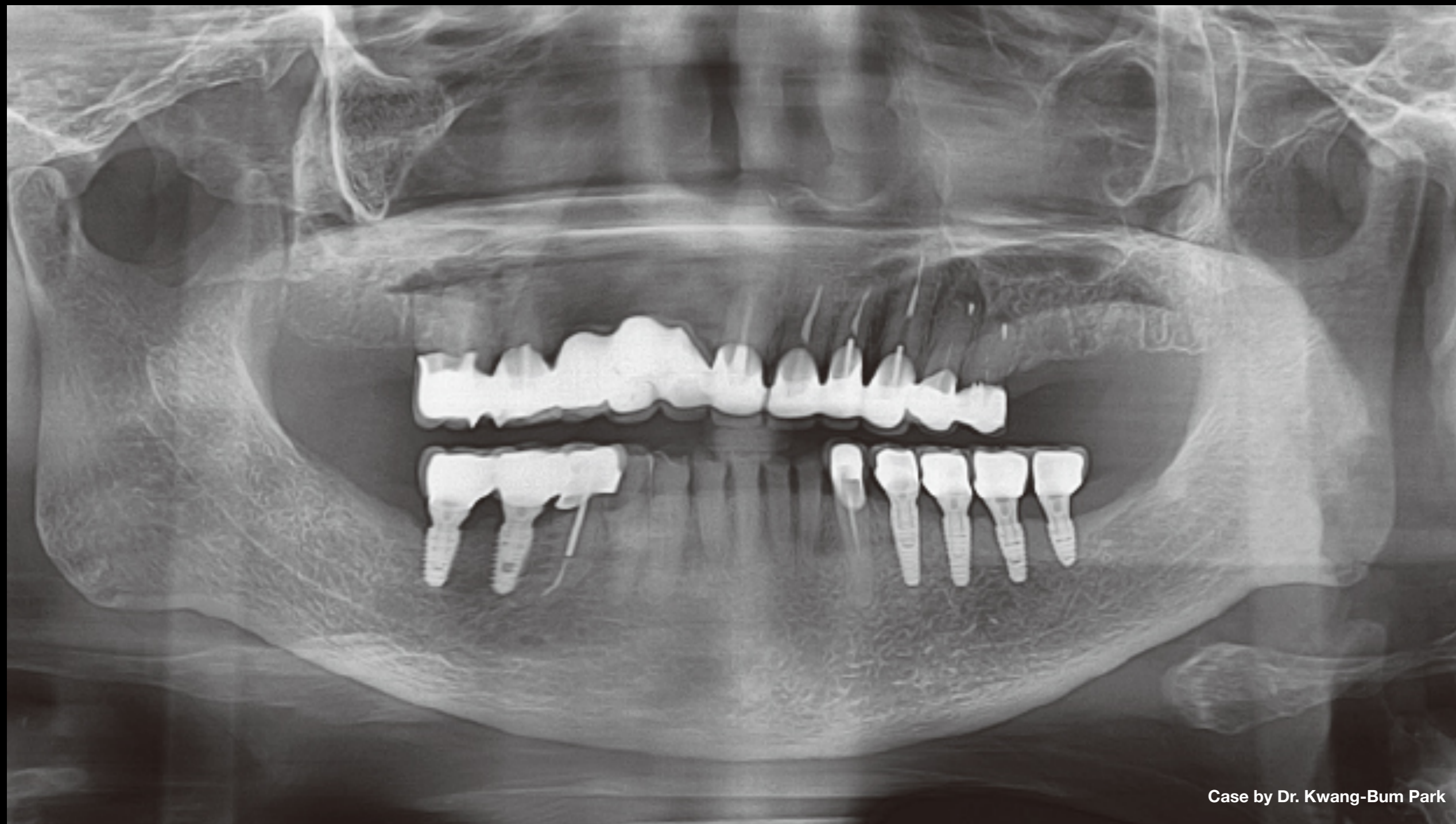
4.5mns

Final restorations

Case by Dr. Kwang-Bum Park

Clinical Case: Post-op radiographs





Case by Dr. Kwang-Bum Park

Clinical Case: Post-op



