

Advantage of fuse abutment with AnyRidge implant for immediate loading in upper fully edentulous case

Dr. Kwang Bum Park



Clinical photos before surgery

Case by Dr. Kwang-Bum Park

Clinical Case:

- Patient had no discomfort or complaints related to mandibular implants
- Plus, patient's hygiene was very good for maintaining healthy peri-implant tissue



Case by Dr. Kwang-Bum Park

Clinical Case:

- All remaining teeth were extracted
- Some teeth had severe periodontitis & some had decay at cervix
- Drilling up to 2.9 mm was conducted at each implant site & eight 3.5×15mm implants were placed using minimal flap
- All fixtures showed excellent initial fixation & immediately-placed implants only had small socket defects





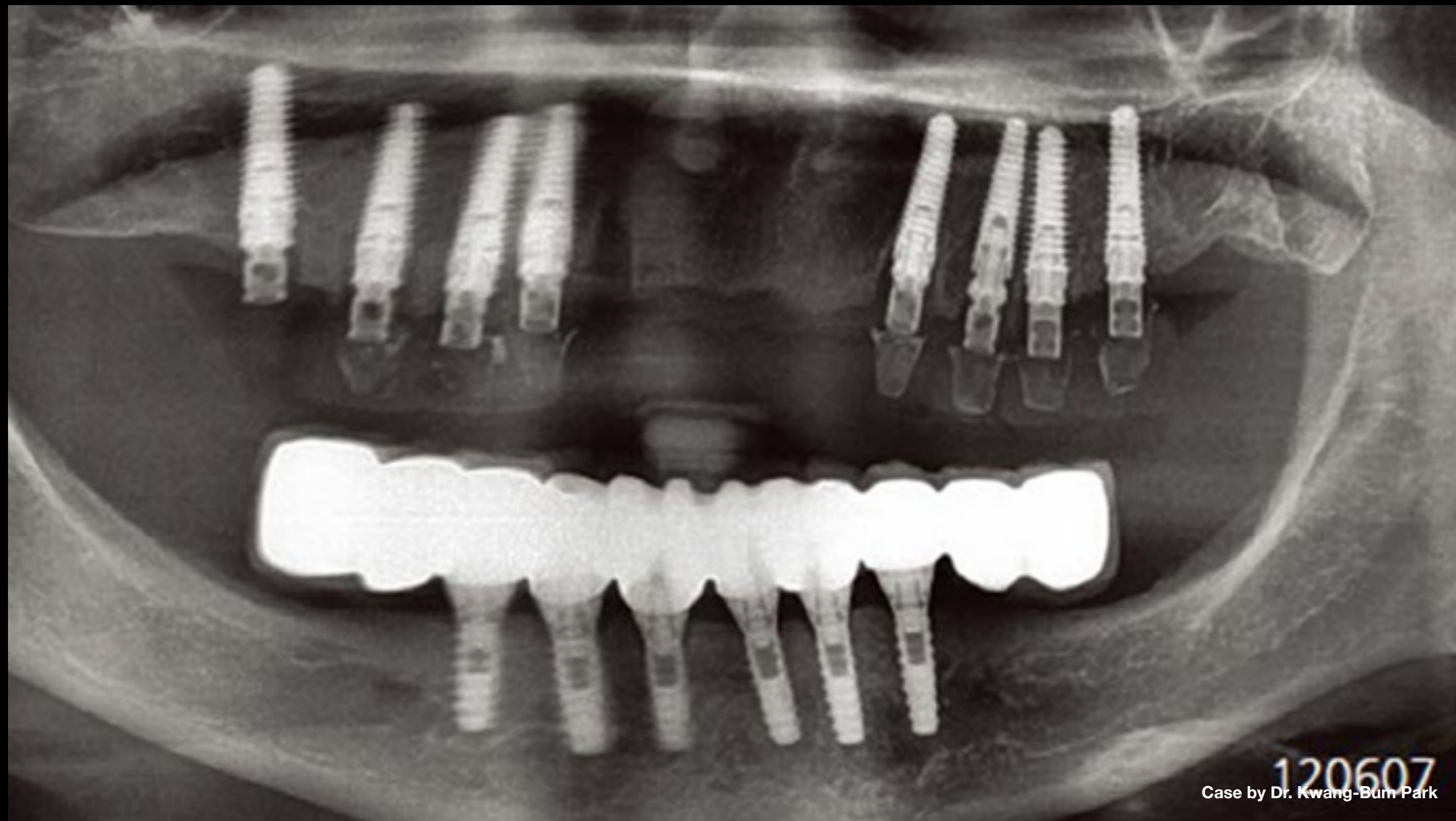
Case by Dr. Kwang-Bum Park

Clinical Case: Eight fuse abutments were connected & flaps were sutured to create tight sealing against fuse abutments



Case by Dr. Kwang-Bum Park

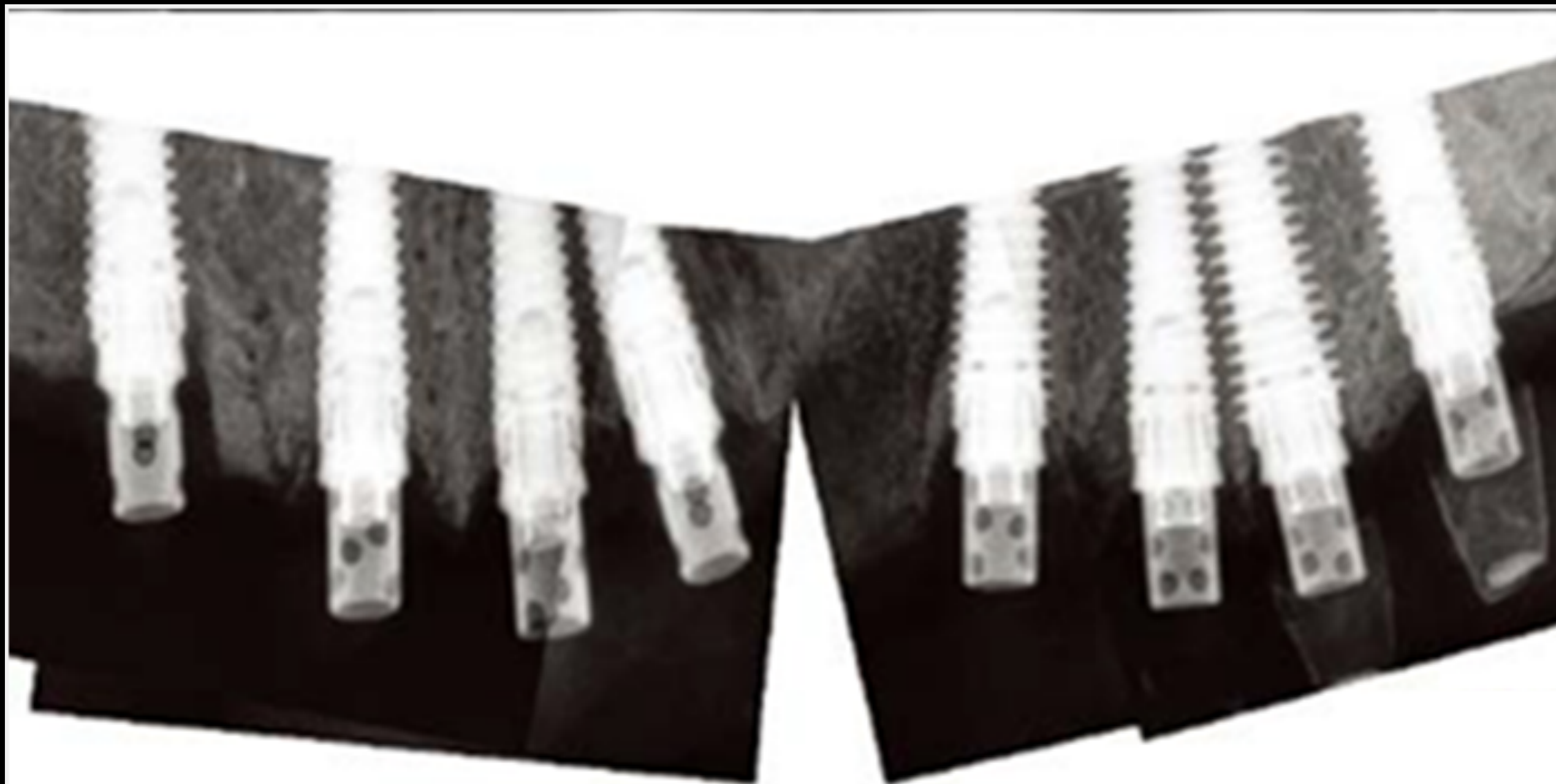
Clinical Case: Fuse abutments were prepared using high-speed handpiece for temporary bridge that had already been made before implant surgery



120607
Case by Dr. Kwang-Bum Park

Clinical Case:

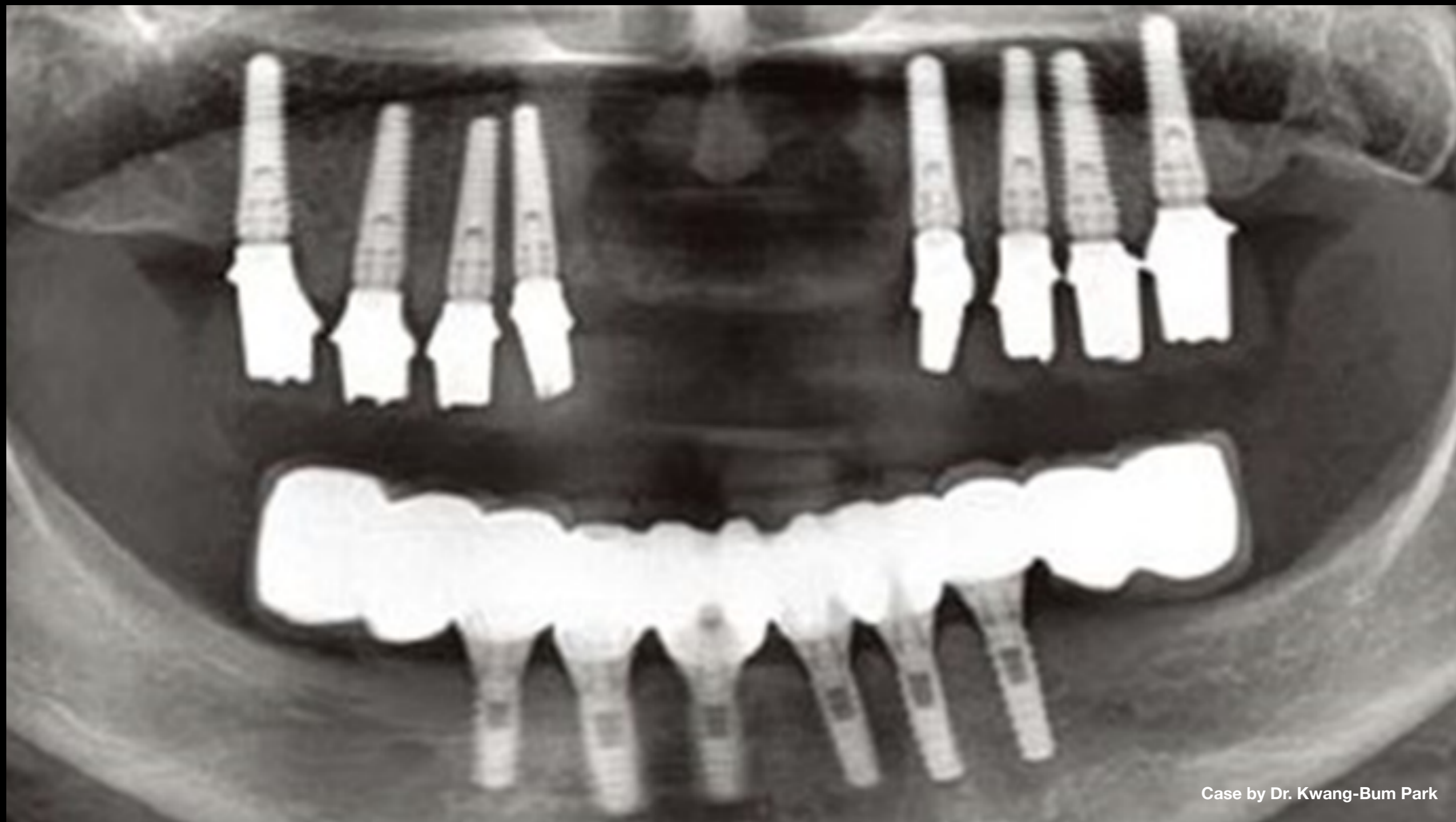
- Panoramic scan taken immediately after surgery
- First premolar implant showed some mis-fit between crown & ratio



Case by Dr. Kwang-Bum Park

Clinical Case:

- Intraoral scans taken 2 months after surgery
- Shadows of extraction socket can still be seen, but regenerated bone has started to fill socket defects
- Fuse abutments are functioning well without any problem
- Impression was taken for customized zirconia abutments



Clinical Case:

- Panoramic & intraoral scans taken 3 months after surgery
- Zirconia customized abutments were connected to each fixture
- Socket defects are completely filled with regenerated bone even in the case of immediate loading on immediately placed implants



Case by Dr. Kwang-Bum Park

Clinical Case





Case by Dr. Kwang-Bum Park

Clinical Case:

- Zirconia customized abutments & PMMA temporary bridge made using CAD/CAM technique
- Zirconia abutment is excellent for both esthetics & hygiene, as has less than 1/10 bacterial accumulation on surface compared with metals including titanium
- PMMA provisional bridge is stronger than tooth resin, especially at margin, so beneficial for functional & occlusal tests

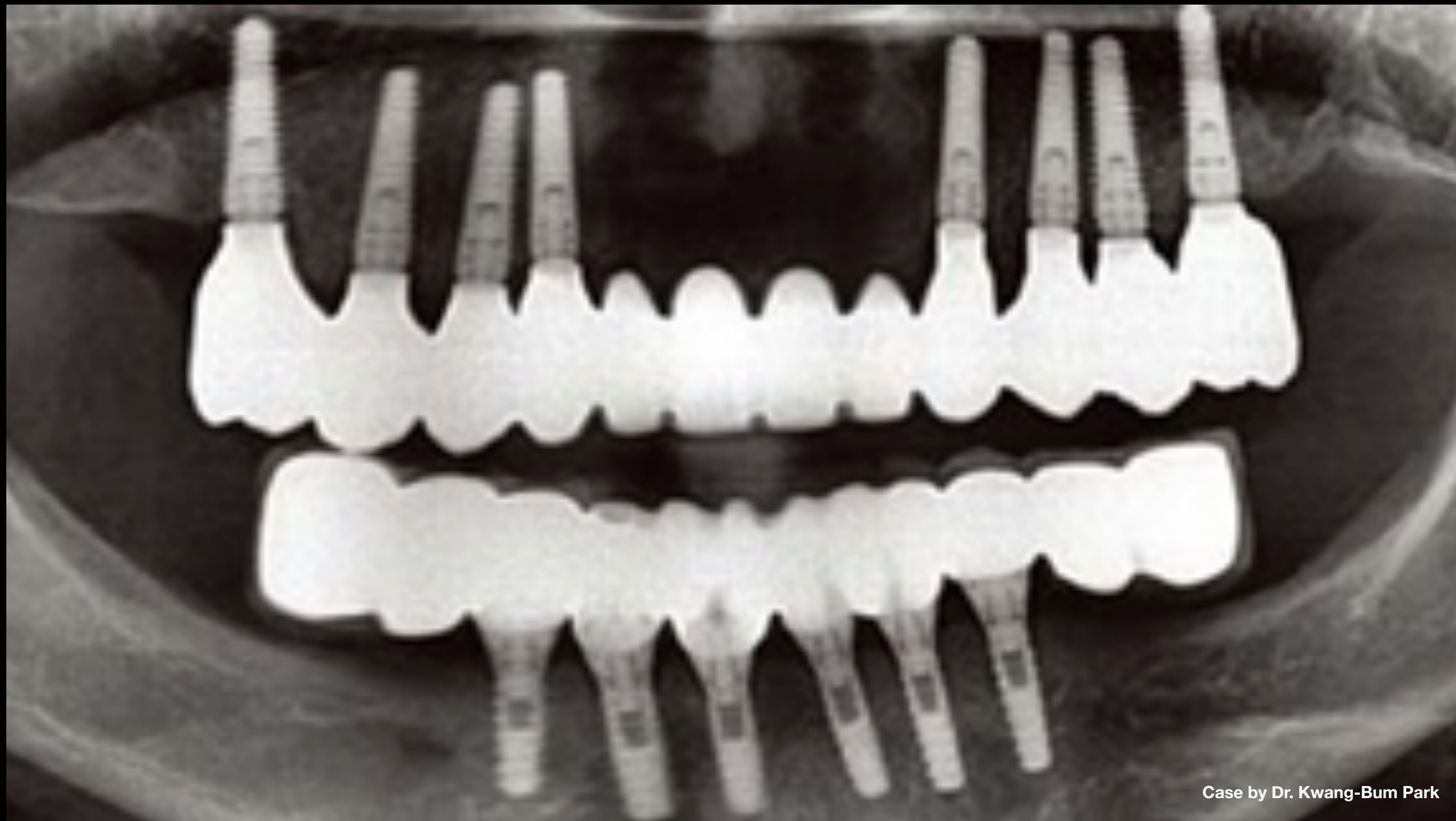


Full zirconia one-piece bridge

Case by Dr. Kwang-Bum Park

Clinical Case:

- Full zirconia one-piece bridge
- Patient was very satisfied & thankful for 'teeth' from beginning to end



Case by Dr. Kwang-Bum Park

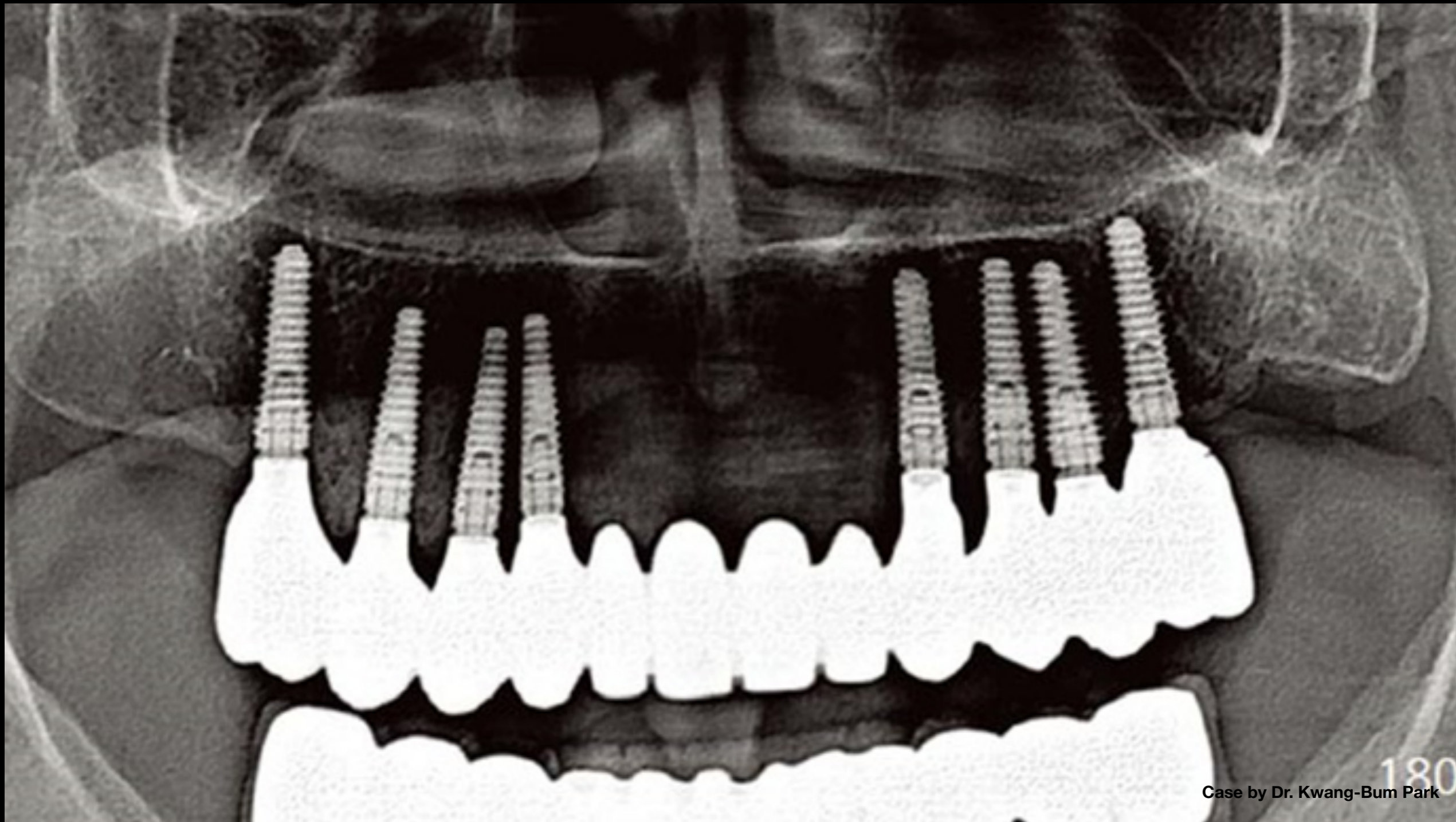
Clinical Case: Panoramic scan of final restorations on day of delivery



Follow-up intraoral scans

130509

Clinical Case



Case by Dr. Kwang-Bum Park

Clinical Case: Panoramic scans at 7-year follow-up



