

New

The Original Technology from W&H

MEG-ENGINE™ III

by MEGA'GEN

- Simple for a stable implant
- Thread cutter function stress free healing
- Powerful Electric motor
- Fatigue-free operation



The Original Technology from W&H

MEG-ENGINE™ III

by MEGA'GEN

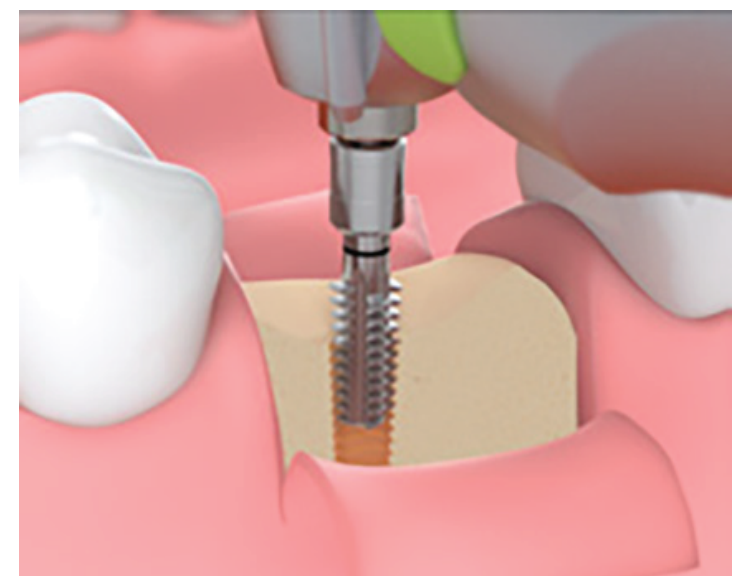
Simple for a stable implant

The automatic torque control offers you support in the safe insertion of implants.



Thread cutter function stress free healing

Use the automatic thread cutter function to insert implants in hard bone. The thread cutter function prevents excessive compression of the bone when inserting the implant.



The Original Technology from W&H

MEG-ENGINE™ III

by MEGA'GEN

Powerful Electric motor

With this powerful electric motor even difficult implantological procedures no longer demand great strength.

Fatigue - free operation

In combination the short motor and the ergonomically shaped contra-angle handpiece are perfectly balanced. You can work for long periods without fatigue or cramp in your hand.



The Original Technology from W&H

MEG-ENGINE™ III

by MEGA'GEN



Contra-angle Handpiece

The surgical contra-angle handpieces with mini LED+ and generator

WS-75L G (20:1)

- Mini LED+ and generator
- Single Spray (Kirschner/Meyer)
- Maximum drive speed: **40,000 min⁻¹**



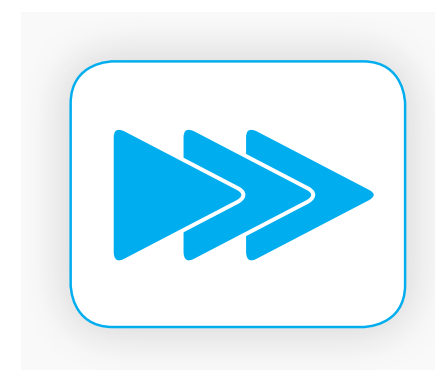
Electric Motor

Electric motor – EM-19

Maximum torque at motor: **6.2 Ncm**

Motor speed range in the rated voltage range: **200 – 40,000 rpm**

- **Without LED+**
- **Without Electric contacts**
- **With 1.8m cable**



Button System Ease of operation

Set up all the steps for an implantation without difficulty by pressing the plus and minus buttons on the unit or by operating the foot control.