

# 911 Kit

by MEGA'GEN

The ultimate solution for implant accidents  
for broken abutments and broken implants!

Handle fixture/Abutment/Screw/Hex fracture

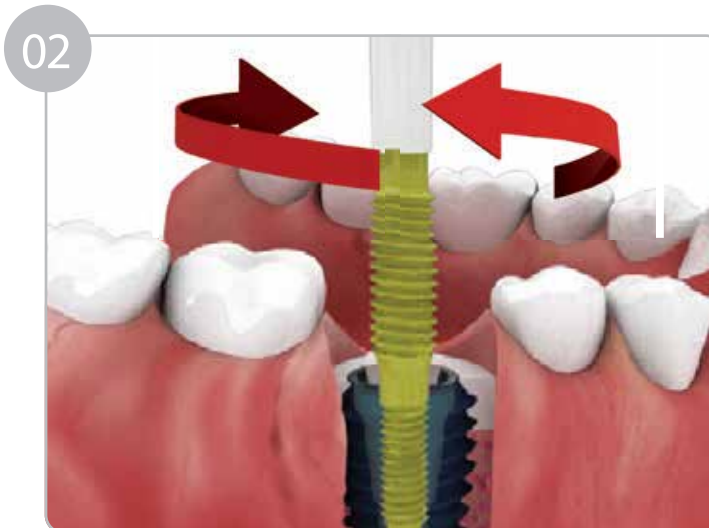


## Fixture Remover

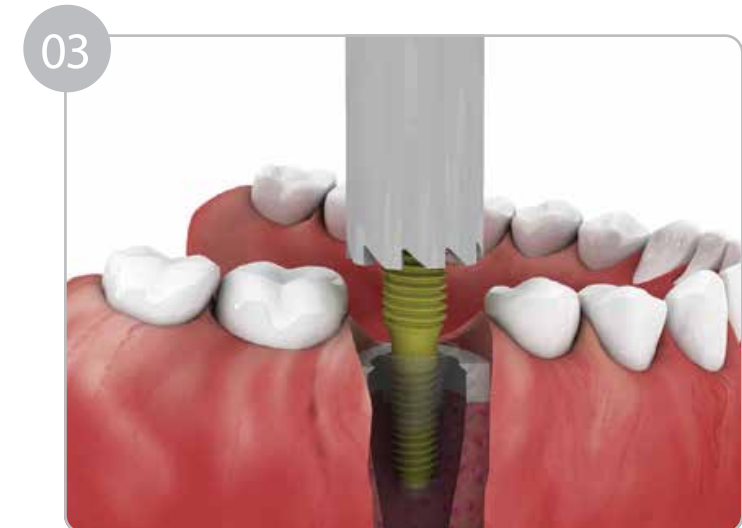
- Fixture Remover Screw: Single use only
- Do not use in case of a gap in fixture remover



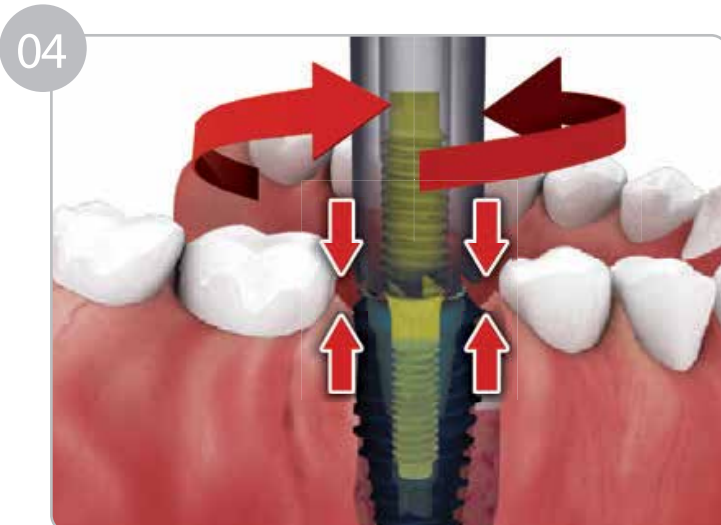
01 Remove the prosthesis of the fixture to be removed, and the surrounding bone.



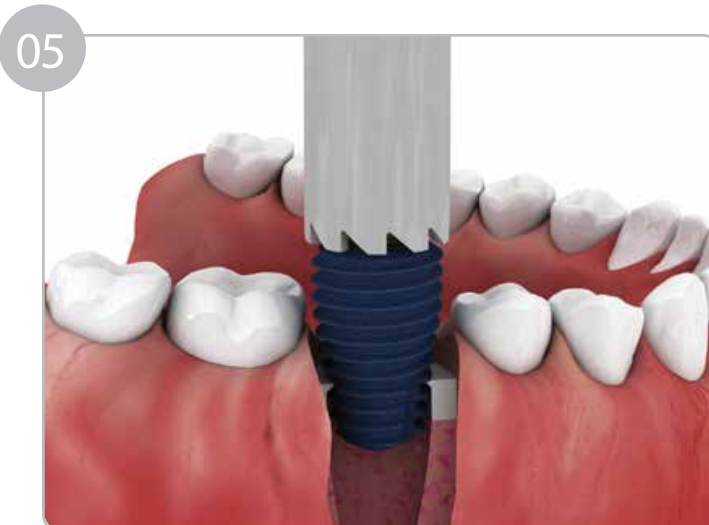
02 Select a Fixture Capture Screw of the same size as the fixture internal screw. Use the Torx Driver to turn the screw clockwise (40Ncm~70Ncm) to place in the fixture. (Use of torque less than 40Ncm for M1.6, and 60Ncm for other products may lead to loosening)



03 Select a Fixture Remover that fits the fixture diameter. Turn the fixed Fixture Remover Screw counterclockwise until it touches the fixture. (For a torque of greater than 300Ncm, it is recommended to use a Trepine bur)



04 Fixture and Fixture Remover are tightly connected as rising force and descending force are combined. (Suction is needed; debris may happen on removal of a fixture)



05 Using Torque Wrench, turn counterclockwise and pull out fixture and Fixture Remover. (No more than maximum torque per fixture)



06 Removed fixture can be pulled out, turning Fixture Remover and fixture clockwise, holding onto vice plier.

# Abutment Remover

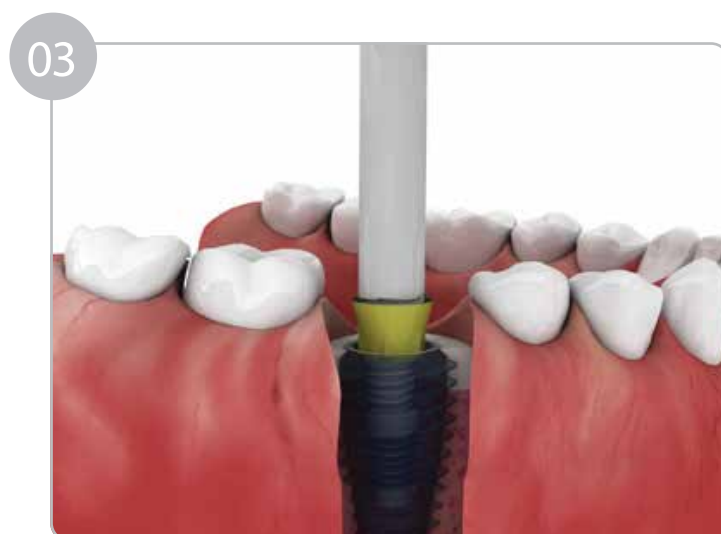
- Can use for abutments that use M1.8 \* M2.0 screws
- Can not use for abutment that use M1.6 and M2.5



01  
Insert the Abutment Remover in the fractured abutment hole.



02  
Use the Ratchet Wrench to turn clockwise in order to join the abutment and the Abutment Remover as one body. (Ratchet Wrench is included in surgical kit)



03  
Move the Abutment Remover sideways while pulling up to remove it. (Use of excessive force may traumatize the fixture or the bone)



04  
Secure the separated abutment in a vice or vice pliers. Use the Ratchet Wrench to turn counterclockwise to separate the abutment with the Abutment Remover.

# Screw Remover



01 Remove the broken Abutment Screw and the abutment.



02 Select the correct Screw Remover Guide that fits the fixture connection to join.



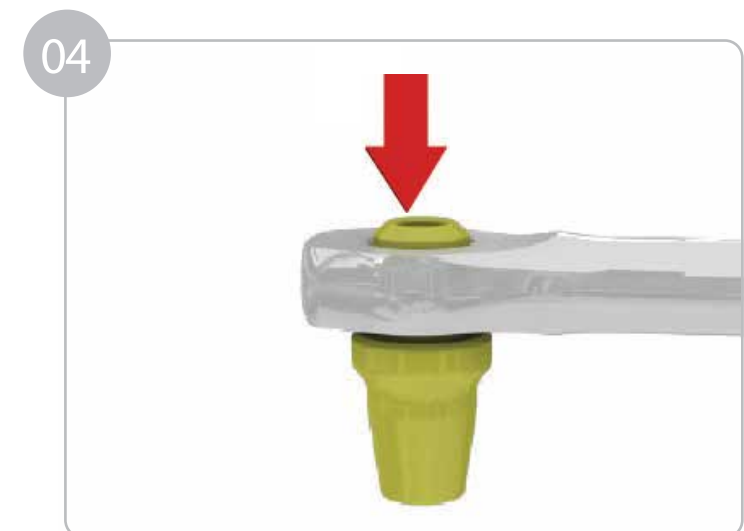
03 Secure the Screw Remover Guide and insert the Screw Holder in the Screw Remover Guide hole.



03 Push the Screw Remover downwards while rotating counter clockwise to separate it from the fixture internal screw.  
(rpm:30~50, Torque : 30Ncm)



04 Remove the pieces of broken screw from the fixture internal screw using forceps.

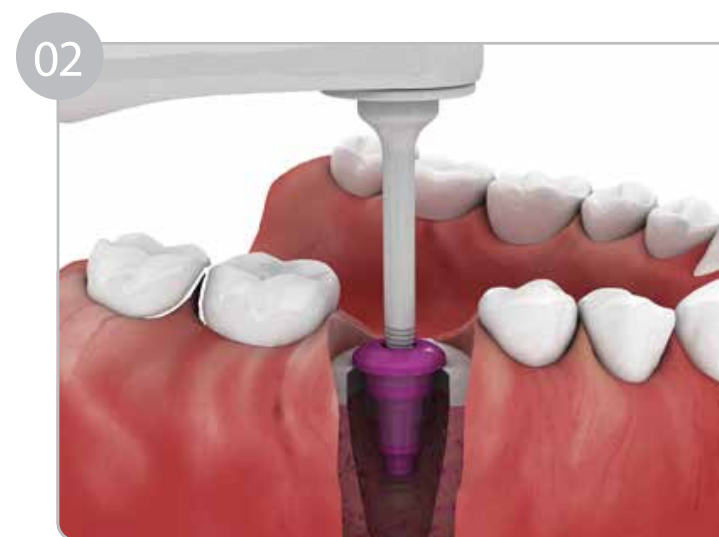


04 When separating the holder from the guide, push in the direction of the arrow to separate.

## Hex Remover



In cases that Abutment Screw, Cover Screw or Healing Abutment's hex is damaged.



Use the Ratchet Wrench to turn counterclockwise to join the abutment with the Abutment Remover as one body. (Use a torque of less than 40Ncm., Ratchet Wrench is included in surgical kit.)



Place the removed abutment in the vice. Use the Ratchet Wrench to turn clockwise to separate the abutment with the Hex Remover.

## 911 Kit Layout

