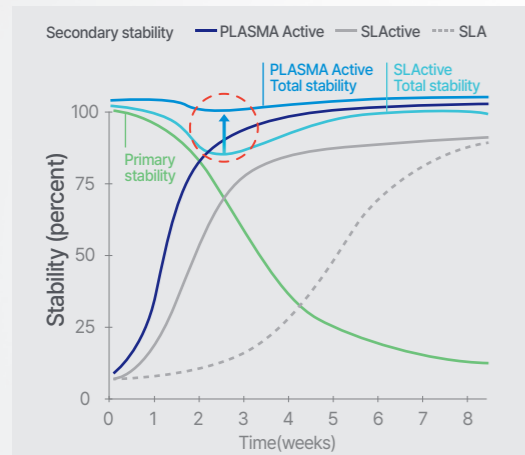


# PLASMA Active

## Accelerated Loading Begins with Plasma Innovation

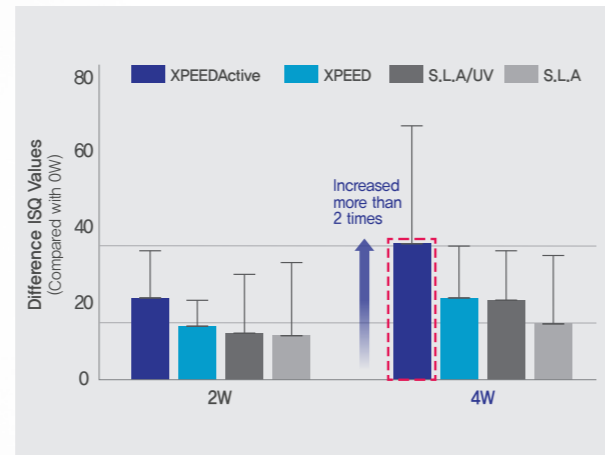
### ENHANCED IMPLANT STABILITY

ISQ, Enabling 2-3week loading



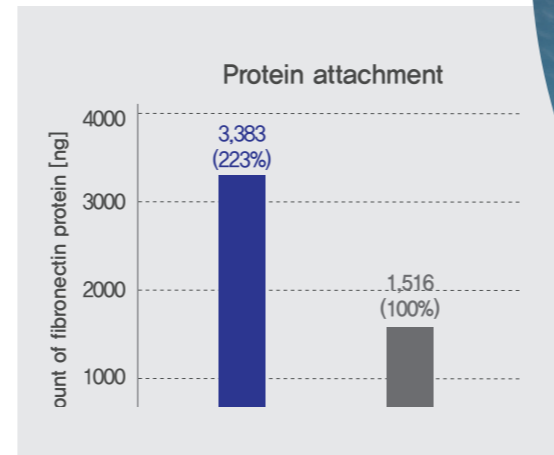
\* Impact of Plasma Surface Treatment on Implant Stability and Early Osseointegration : A Retrospective Cohort Study

40% Increased ISQ Values



\* Evaluating the effectiveness of plasma-treated implants using a rabbit model/ Daegu-Gyeongbuk Medical Innovation Foundation (2022)

2.23-fold Increased Protein Adsorption

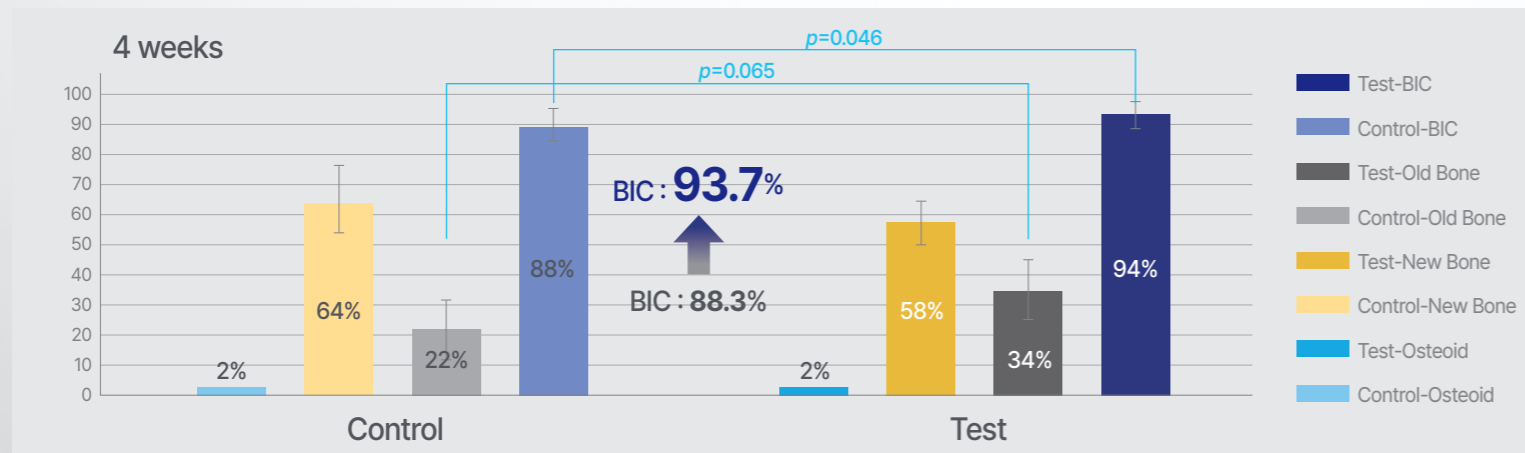


\* Enhanced osteoblast adhesion and proliferation on vacuum plasma-treated implant surface / Author HJ Jeon, Ara Jung, HJ Kim, JS Seo Applied Sciences, 2022, 12, 9884. <https://doi.org/10.3390/app12199884>



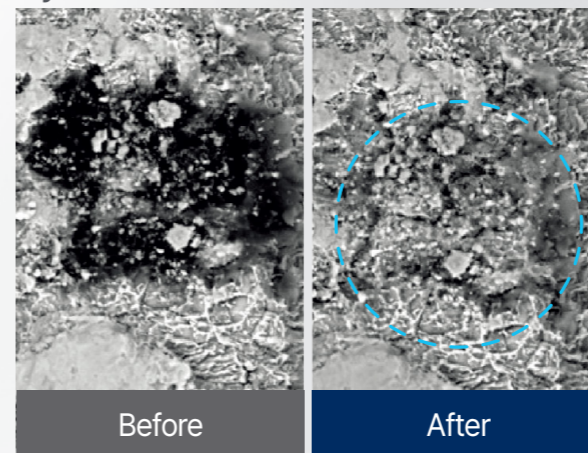
### INCREASED BONE-TO-IMPLANT CONTACT AREA

BIC at 4 weeks ↑94%

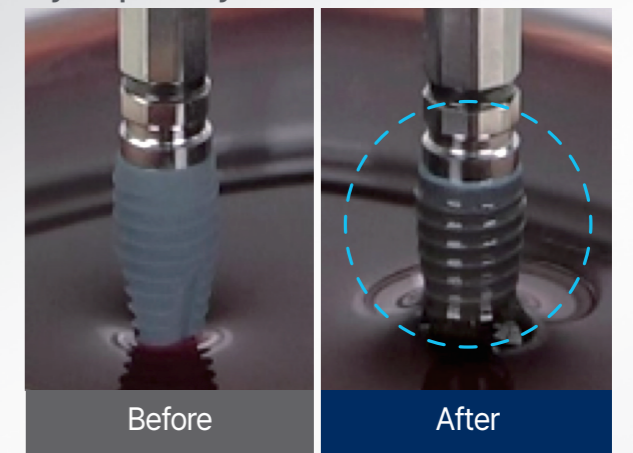


### REFINED HYDROPHILIC SURFACE

Hydrocarbon removal rate 58%



Hydrophilicity enhancement





**One touch click!**

Easy start and stop with a single button

**LED signal**

Allow you to check the plasma progress level.

**Plasma processing**

Plasma treatment phenomenon visible to the naked eye.

**Vacuum & Plasma chamber**

Plasma treatment phenomenon visible to the naked eye.

# PLASMA Active

## Better than ever.

PLASMA X motion	VS	PLASMA Active
2.0	Version	4.0
Max 3,000 cycles	Usage (limited)	Max 7,000 cycles
Only Direct Mode	MODE	Direct / Vortex Mode
Direct : 30 / 8 / 17 (55s) *Pumping / Plasma / Purification	Cycle Time	Direct : 30 / 15 / 35 (80s) Vortex : 30 / 30 / 5 (65s) *Pumping / Plasma / Purification
Implant JIG	Accessories	Disk Holder Clip Holder Material Holder 4.0
Implant Only	Feature	Various dental materials (implants, abutments and bone grafts etc.)

Size(W x H x D)(mm)	170 × 345 × 266
Weight(kg)	6
eV(electron density)	21eV